

Immunology Core for Imaging and Flow Cytometry
an MGH/CFAR facility offering services for:

Flow Cytometry & Cell Sorting

Michael Waring
(857) 268-7069
mwaring@mgh.harvard.edu

Consultation services

Sample Preparation
Experimental Design
Data Analysis

Microscopy & Image Analysis

Thomas Diefenbach, PhD
(857) 268-7046
tdiefenbach@partners.org



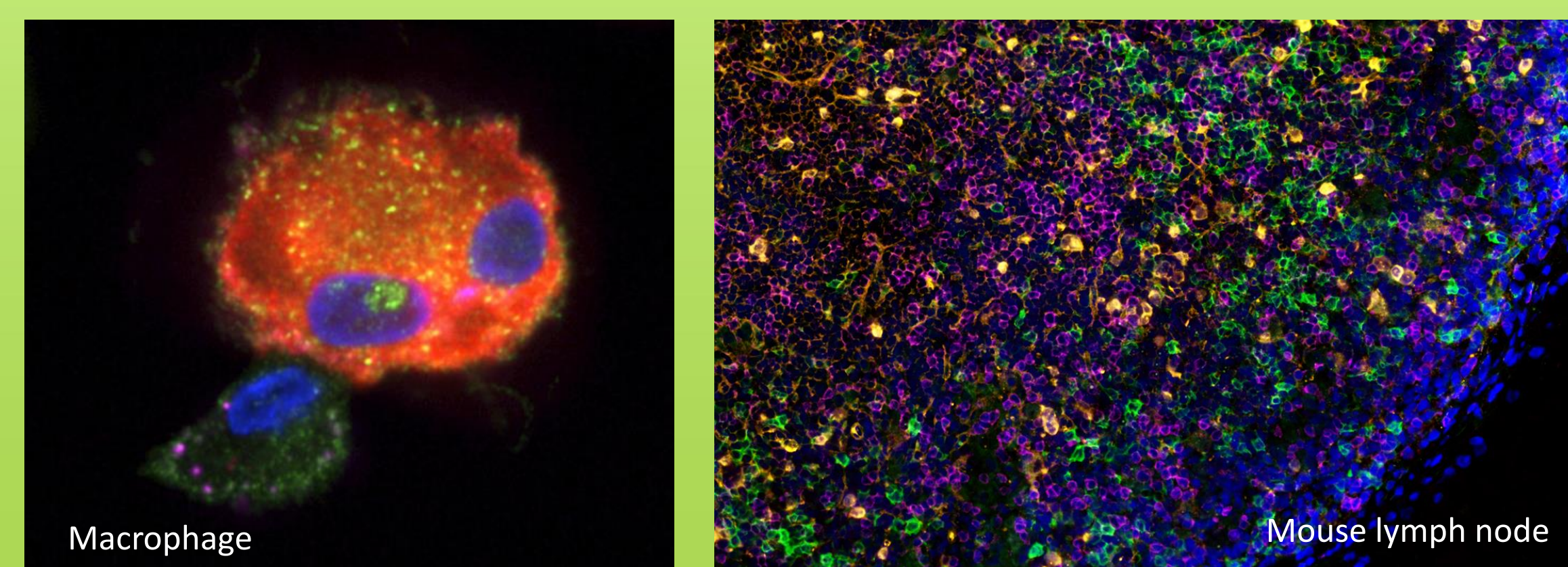
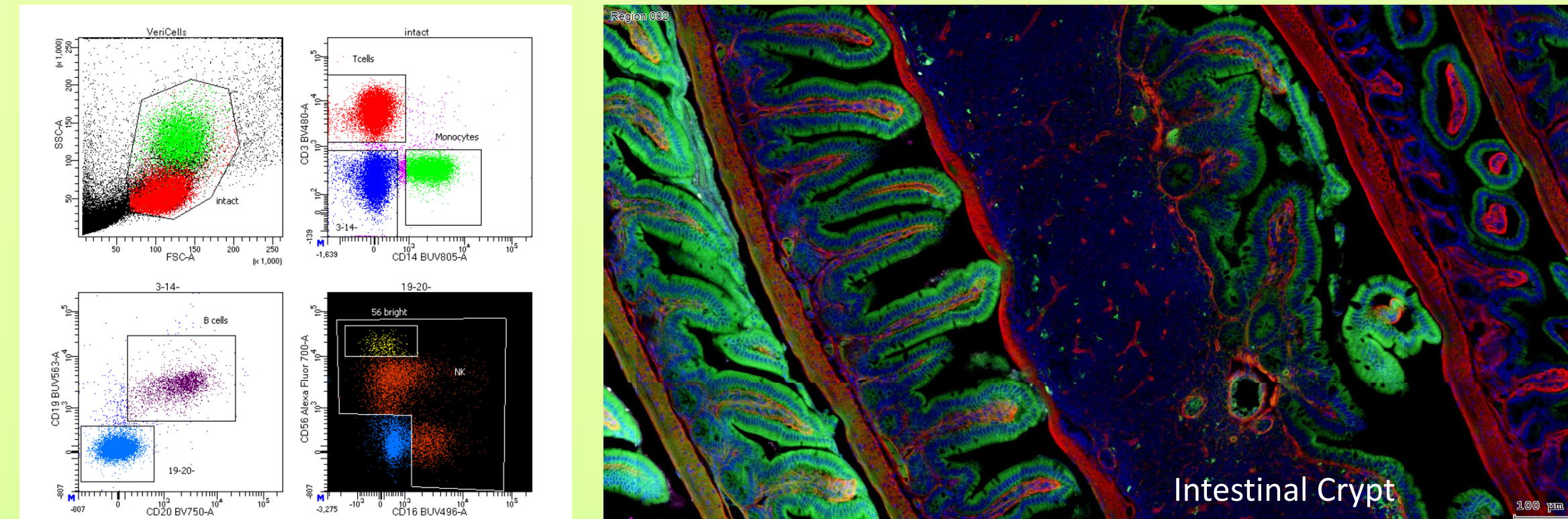
Flow Cytometry Analysis

- FACSymphony 5 laser, 29 color, HTS
- Two 5 Laser LSR Fortessas, 18 colors, HTS
- Two 4 Laser LSR II's, 18 colors
- 3 Laser LSR II, 16 colors, HTS
- BioPlex 3D and FlexMap 3D systems

Cell Sorting (BL2+)

- 5 Laser FACSariaII SORP
- 4 Laser FACSaria Fusion
- 3 Laser Sony SH800
- AutoMACS Pro

www.ragoninstitute.org/research/services/flow-cytometry



Now serving:

Ragon and CFAR members
Greater MGH community
MIT and Harvard Members & Affiliates
Biotech/Pharma/Industry



Automated slide/tissue scanners

- TissueFAXS Whole Slide Scanning System

Confocal/live cell imaging (BL2+)

- Confocal Microscopy
- Zeiss Axio Imager
- high speed, long term time-lapse or multi-well plate imaging

Imaging Flow Cytometry

- ImageStream X MkII
- 12 channels, up to 5000 cells/second

www.ragoninstitute.org/research/services/microscopy