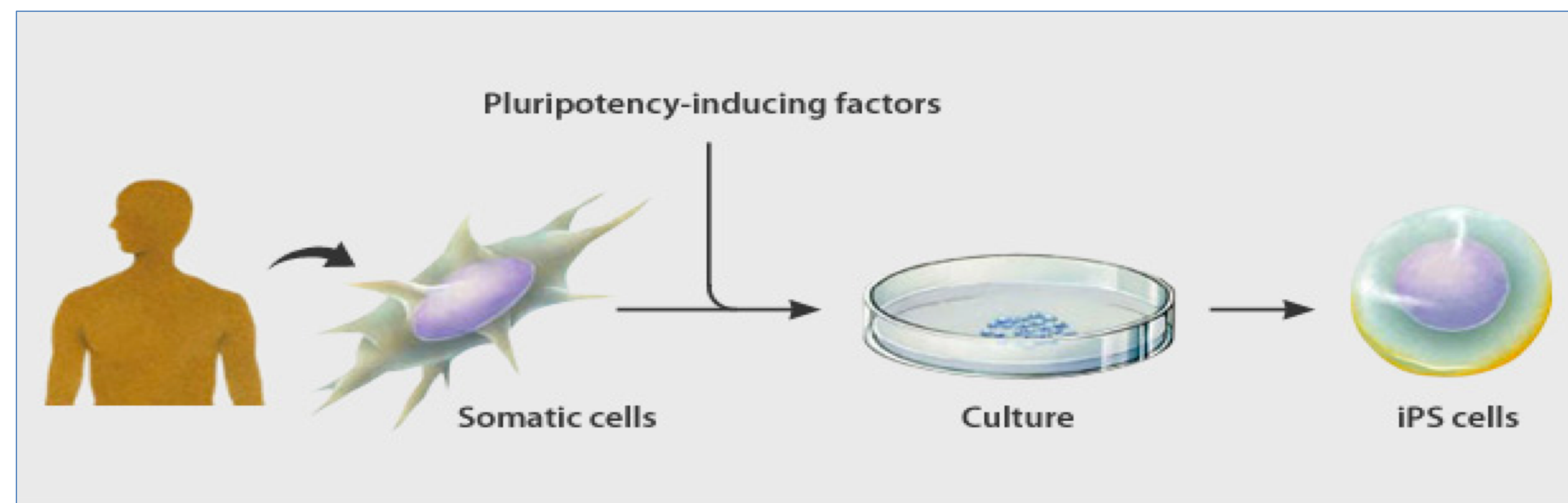


Joslin Diabetes Center :GEC Facility

What do we offer

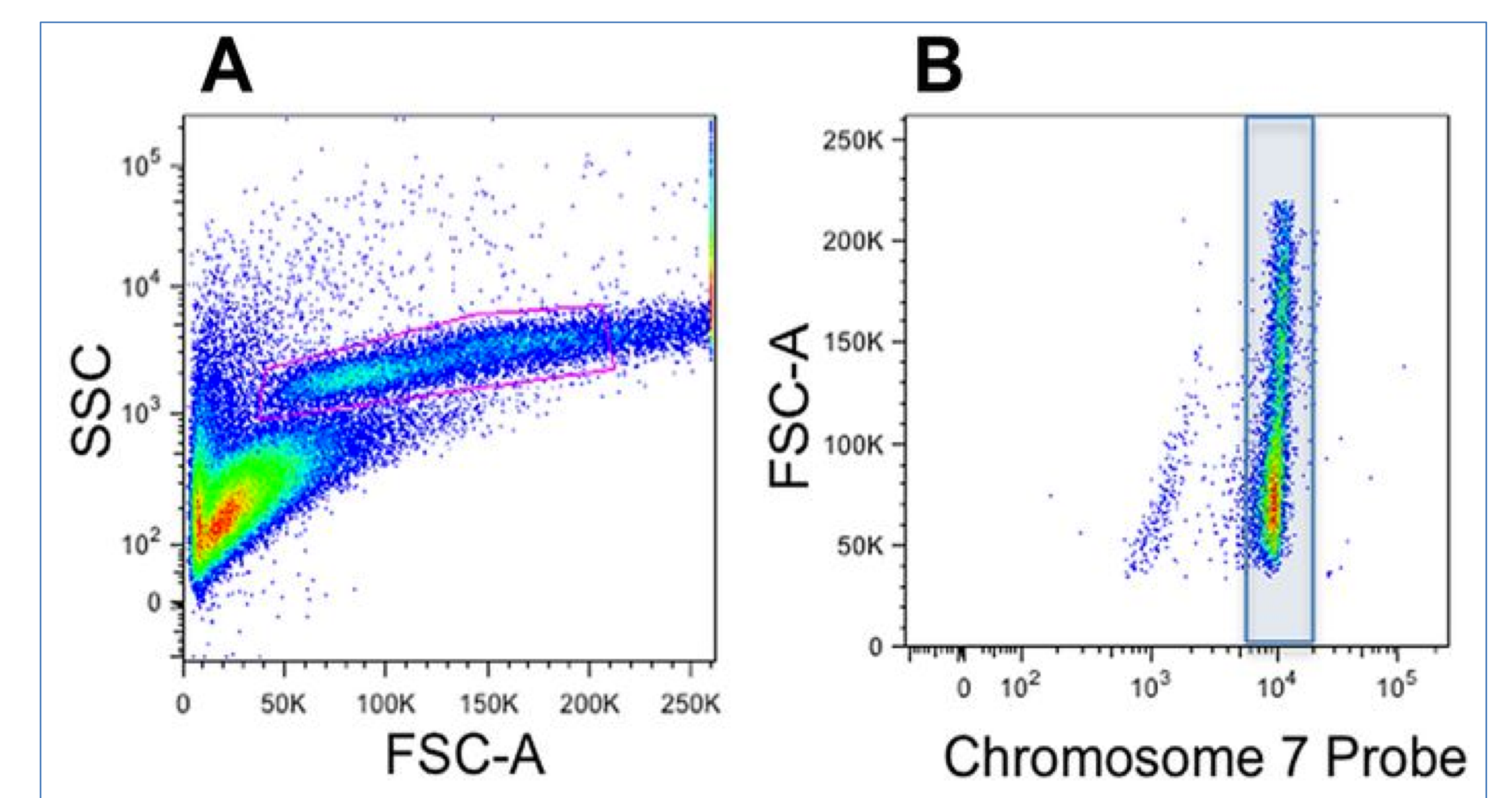
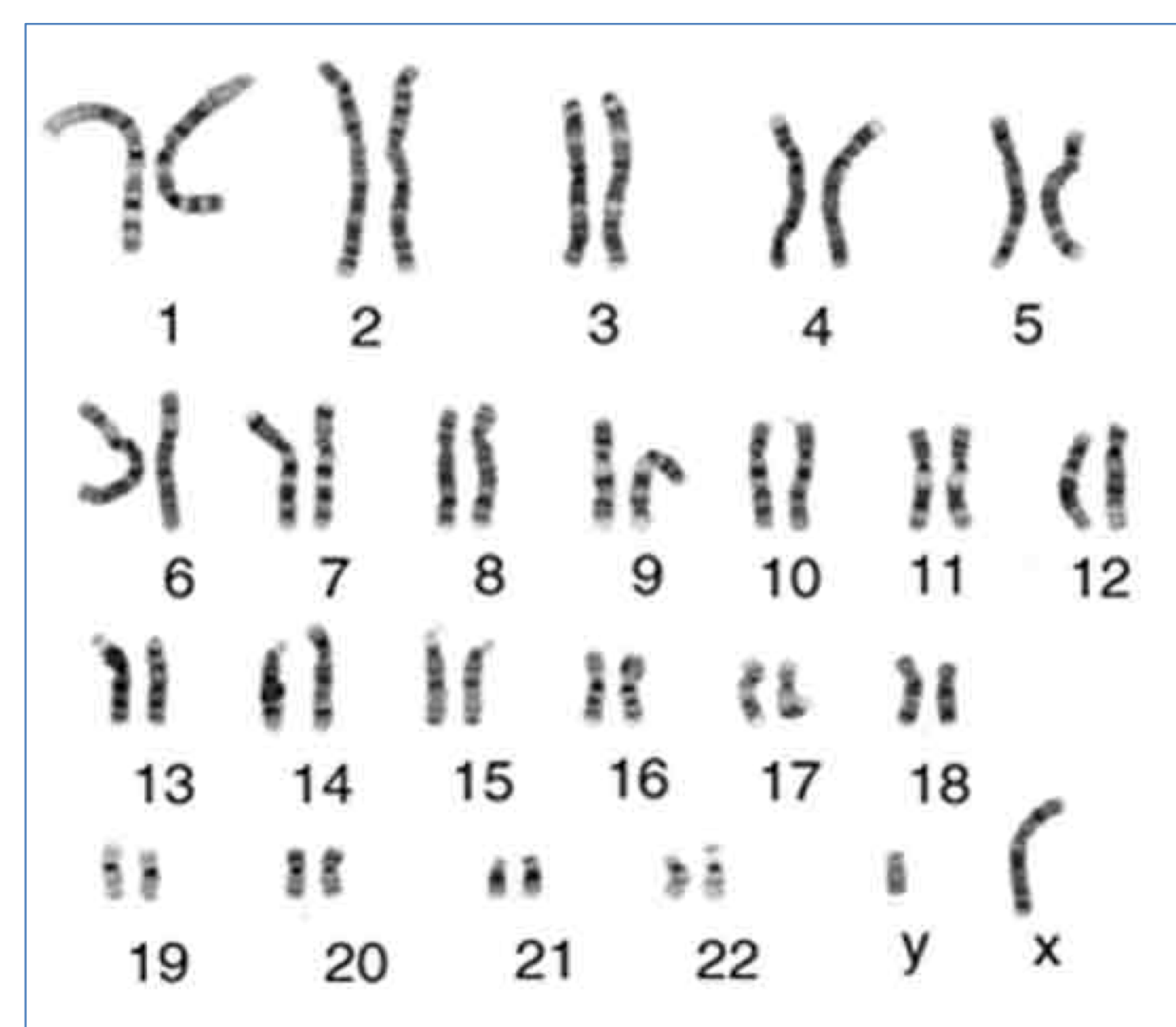
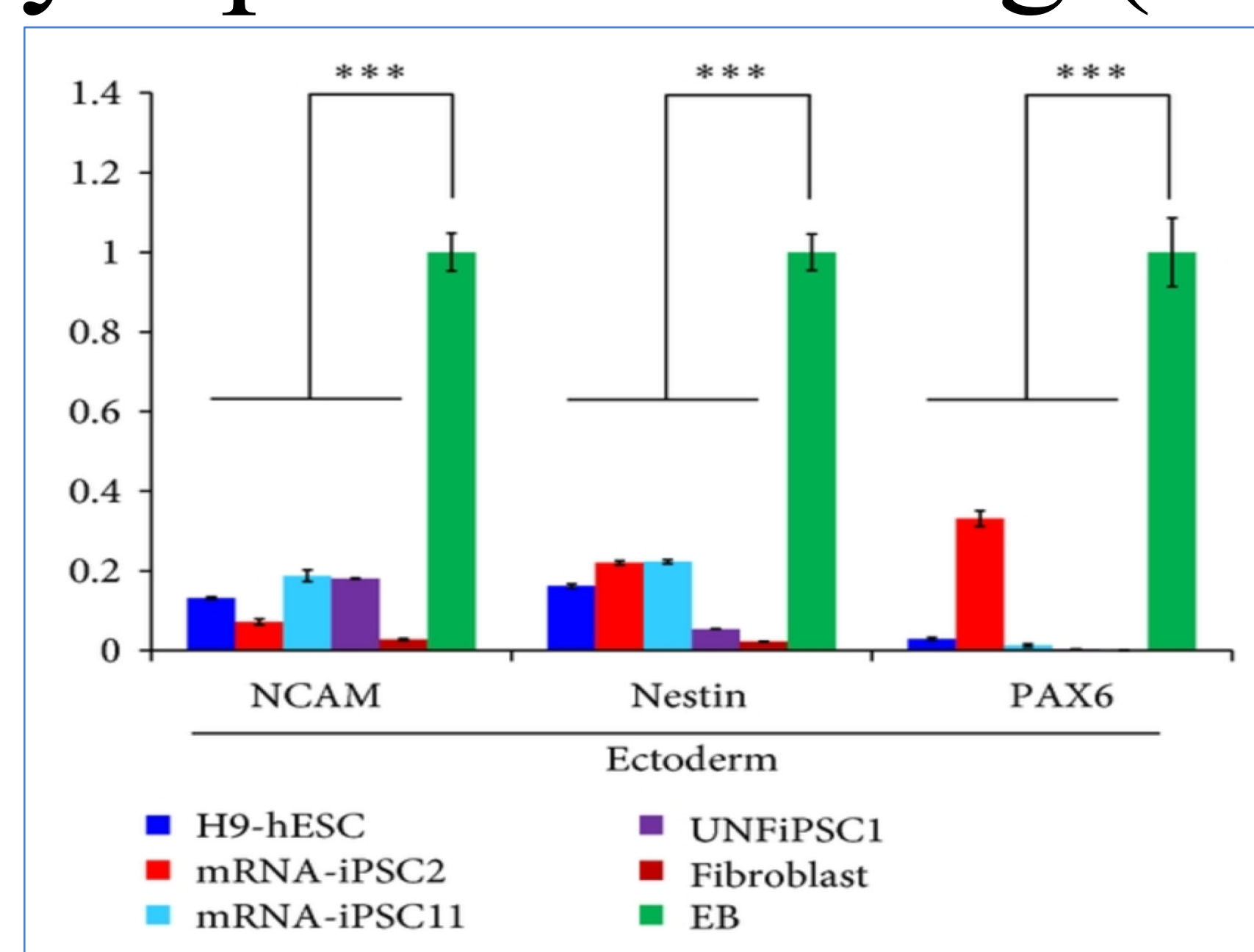
iPS Derivation:

The iPS Core offers reprogramming services for fibroblast and blood cells using non-genome-integrating vectors.

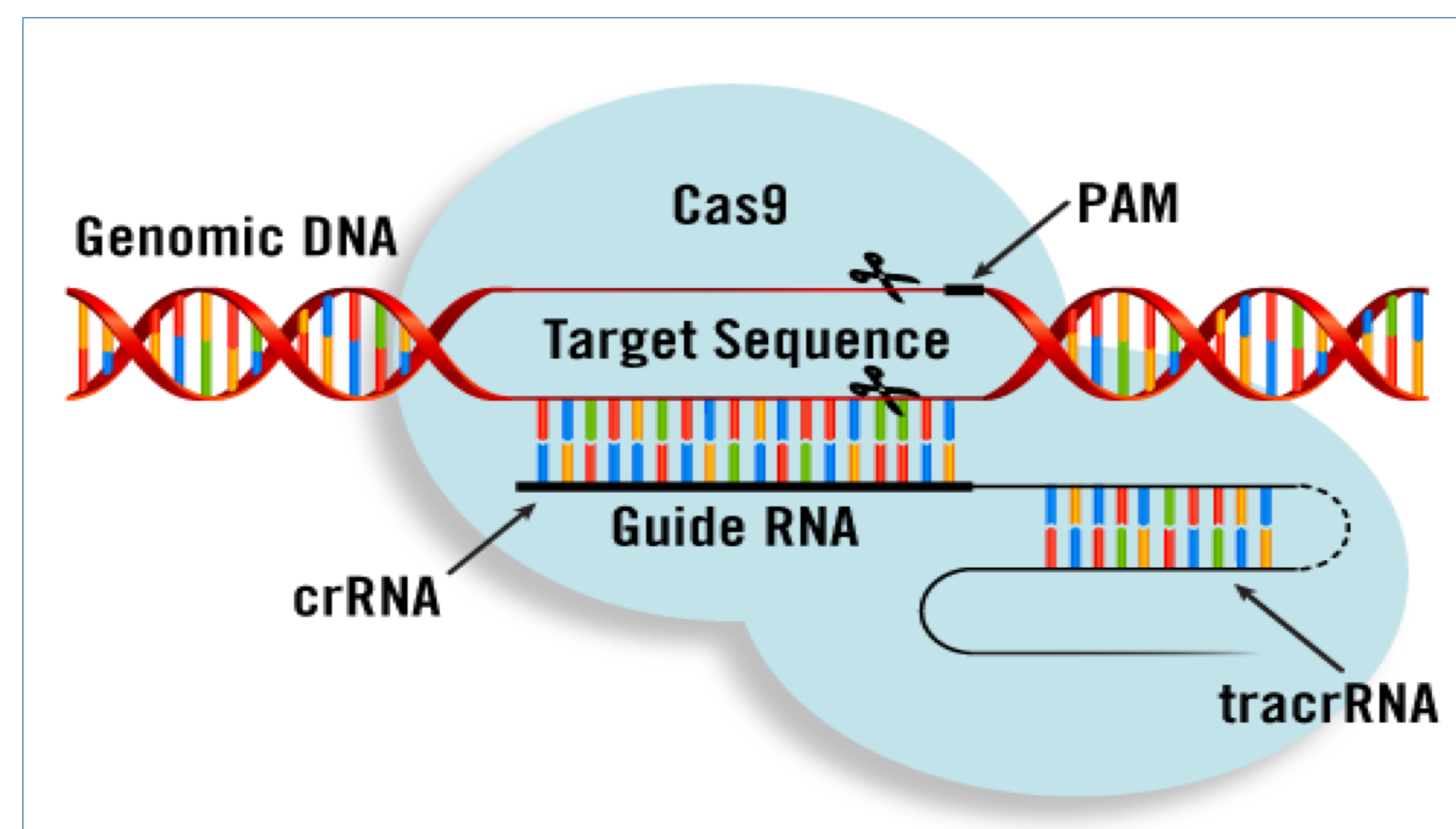


Characterization Service:

- Pluripotency Characterization by Flow Cytometry or mRNA Analysis
- Karyotyping
- Teratoma Assay
- Mycoplasma Testing (Not limited to human iPSC cultures)



Gene Editing Services: The iPS core begun offering gene editing services using the CRISPR/Cas9 system. This includes generation of genetic knock out lines as well as gene correction. Services is not limited to human iPSC cultures.



Contact Information: iPScore@joslin.harvard.edu