



# DF/HCC Transgenic Mouse Core

## Core Overview

The Transgenic Mouse Core, established in 1992 by Dr. Arlene Sharpe, provides gene targeting and microinjection services using state-of-the-art facilities and equipment.

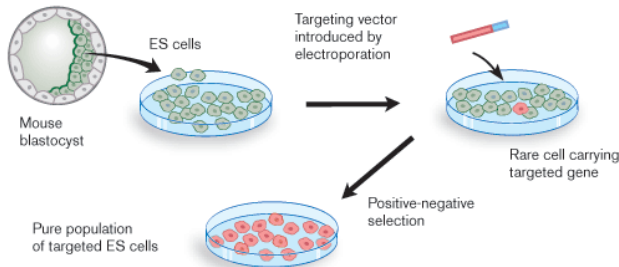
The Core has extensive experience generating transgenic mice using DNA constructs (including BAC DNAs) and lentiviral constructs. We also offer CRISPR injections for DNA engineering *in vivo*. We have a track record of success generating KO/KI mice by performing gene targeting, or by expanding targeted ES Cells from consortia.

The Core works with investigators to achieve optimal outcomes for each project.

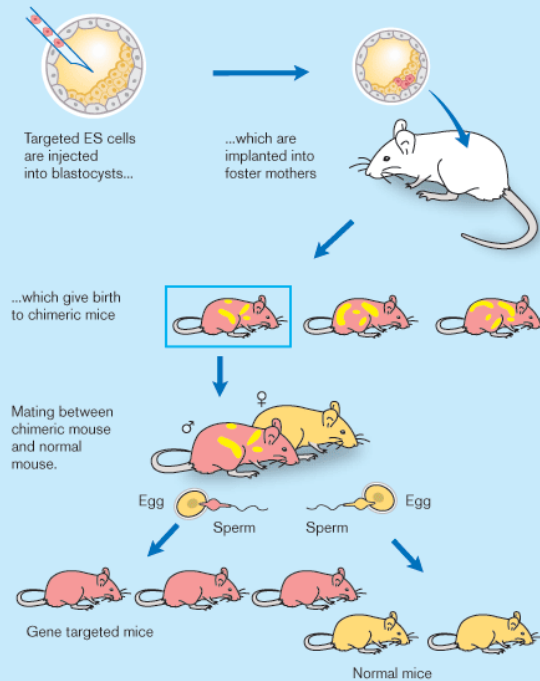


<http://www.einstein.yu.edu/transgenic/20-3-embryos-j-rev1.jpg>

## A. Gene targeting of embryonic stem cells



## B. Generation of gene targeted mice



[http://www.nobelprize.org/nobel\\_prizes/medicine/laureates/2007/adv-fig-1\\_web.gif](http://www.nobelprize.org/nobel_prizes/medicine/laureates/2007/adv-fig-1_web.gif)

ANNIKA RÖHL

## Services

### Generation of Transgenic/KO mice:

- ES Cell and DNA Injections
- **CRISPR Injections**
- ES Cell Transfections (B6, 129)
- Expansion and Microinjection of ES Cell Clones from Consortia

### Mouse Strain Preservation:

- Embryo and Sperm Cryopreservation
- In Vitro Fertilization
- Thawing and Implantation of Frozen Embryos

Please contact the core at  
(617) 432-6182 or  
[transgenicmousecore@gmail.com](mailto:transgenicmousecore@gmail.com)  
if you have any questions.

You can also visit  
<http://immdiv.hms.harvard.edu> and click on  
"Resources"

We look forward to working with  
you on your next project!