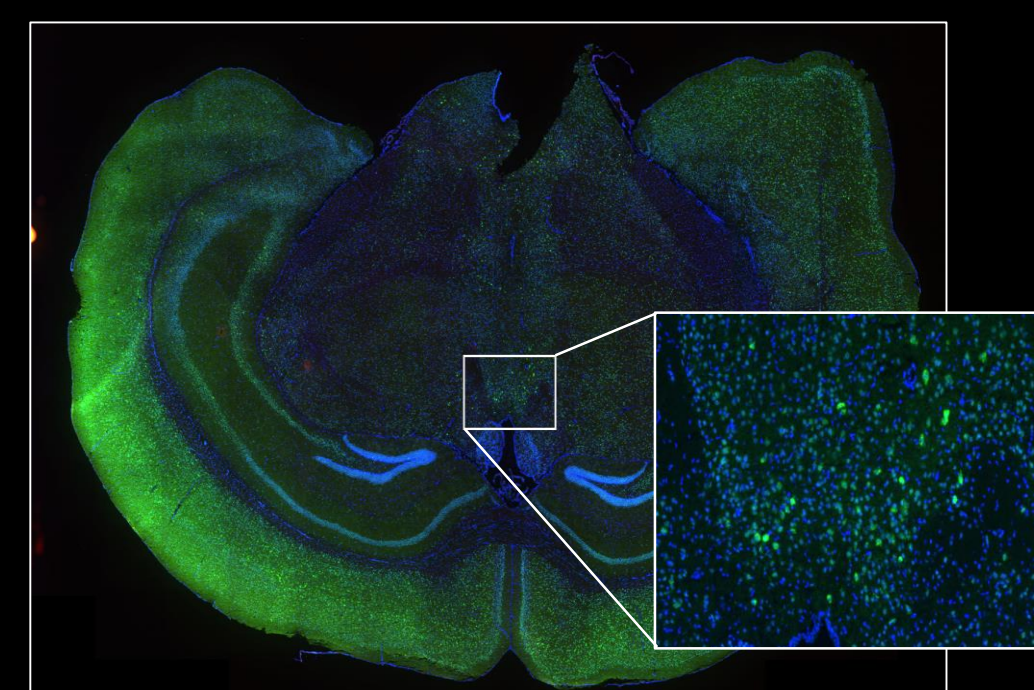


NEUROBIOLOGY IMAGING FACILITY

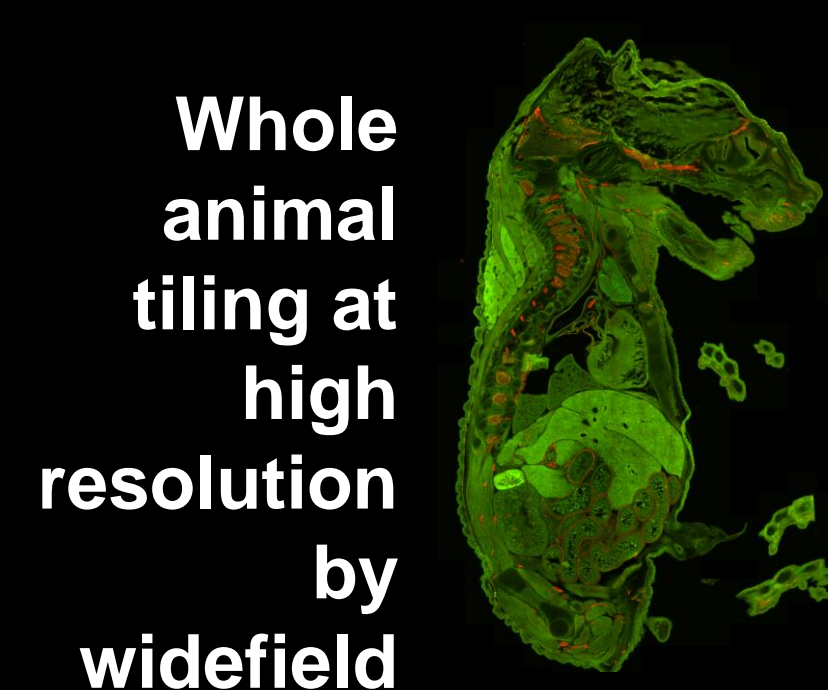
Acquire

Acquire stunning images from whole organ to single molecule

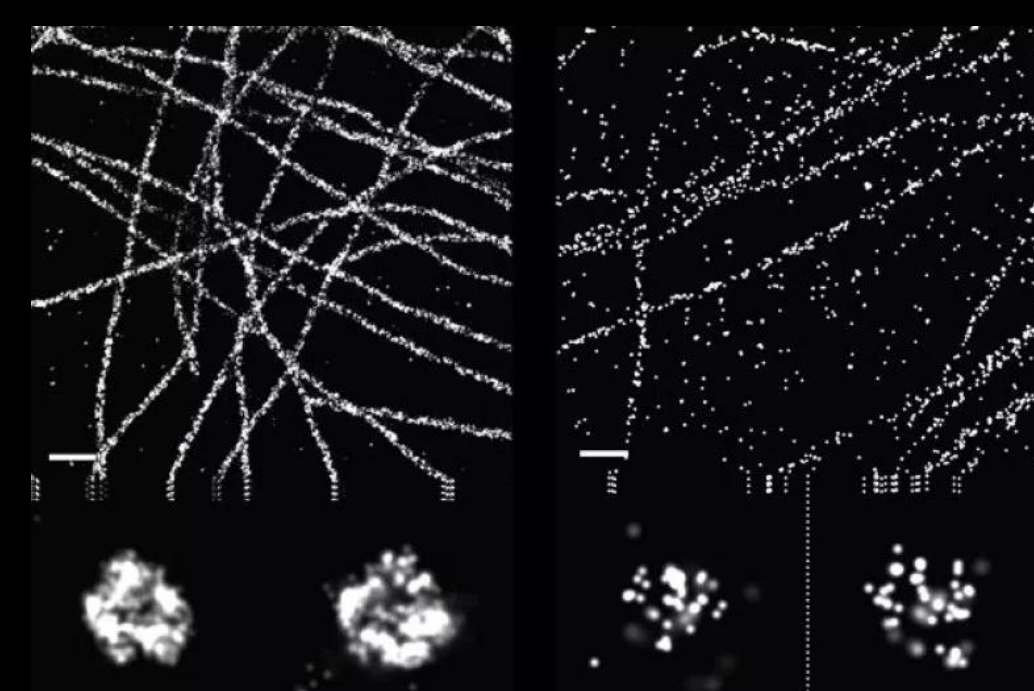
- Live or fixed
- Immunolabeled and histological samples
- Slides, culture dishes, chambers and plates
- Single molecule to whole animal imaging
- Micro-second to multiday experiments
- Fluorescence, transmission, spectral unmixing, Ca+ imaging, photoconversion, photoactivation, DIC, MPE



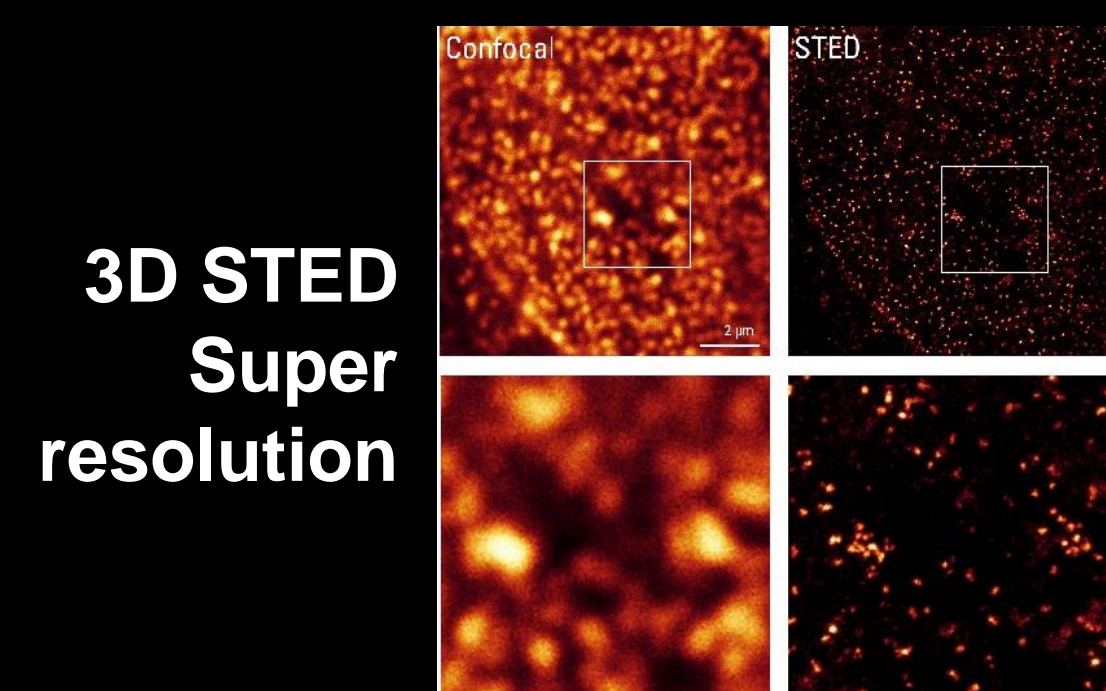
Whole organ tiling at high resolution by confocal or widefield



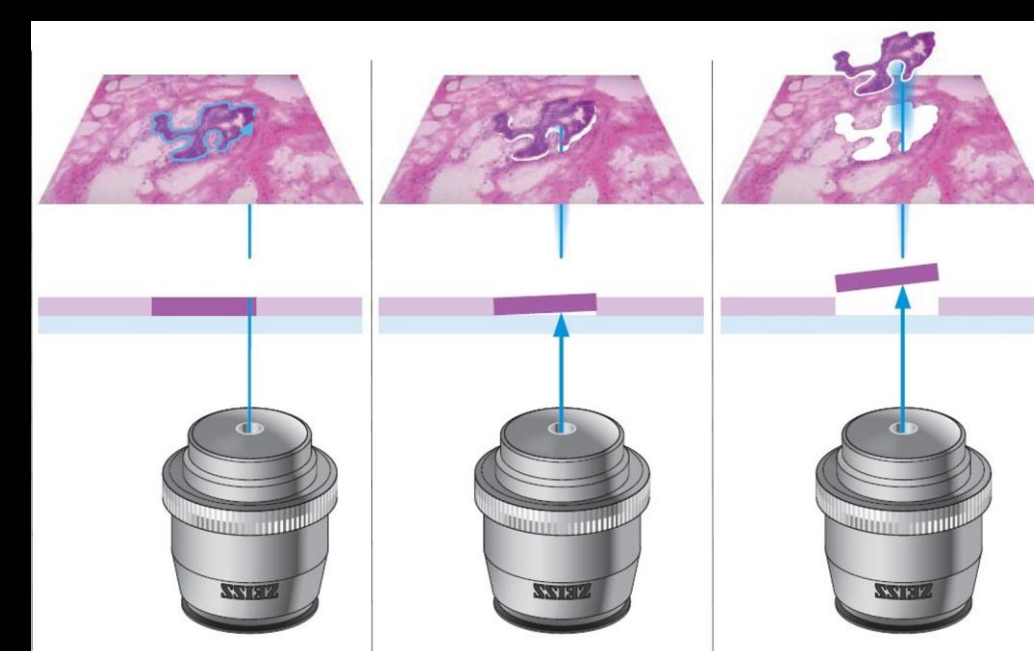
Whole animal tiling at high resolution by widefield



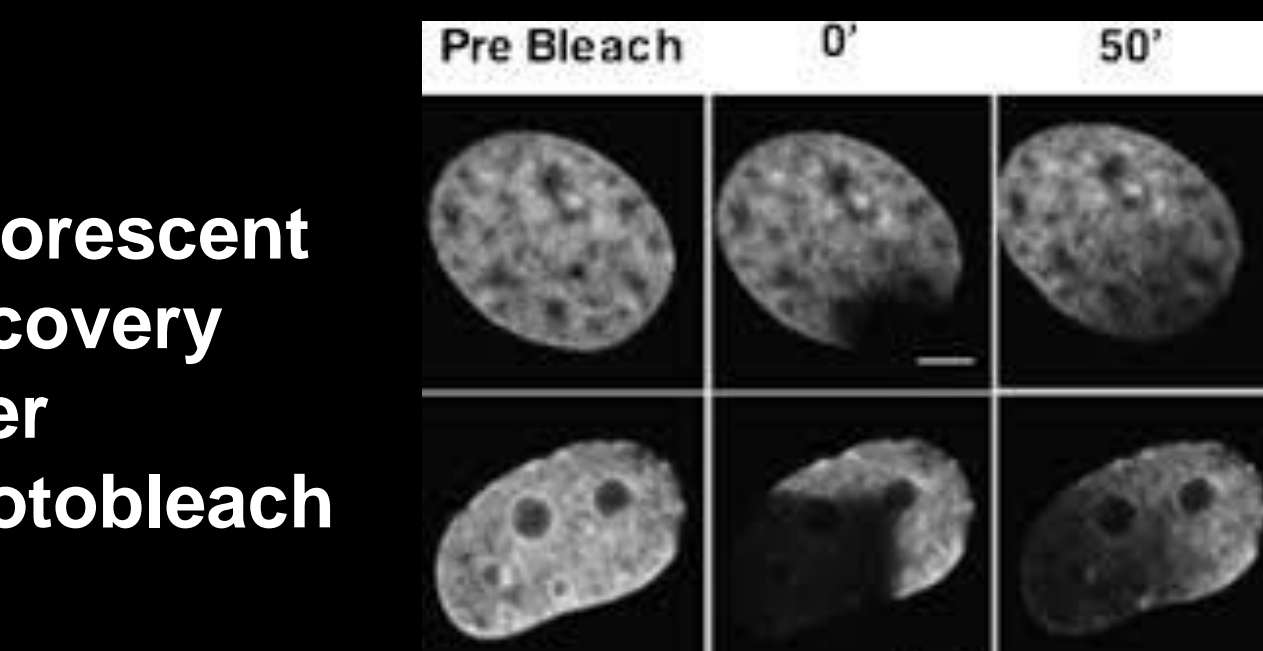
STORM Super resolution microscopy with multiplexing



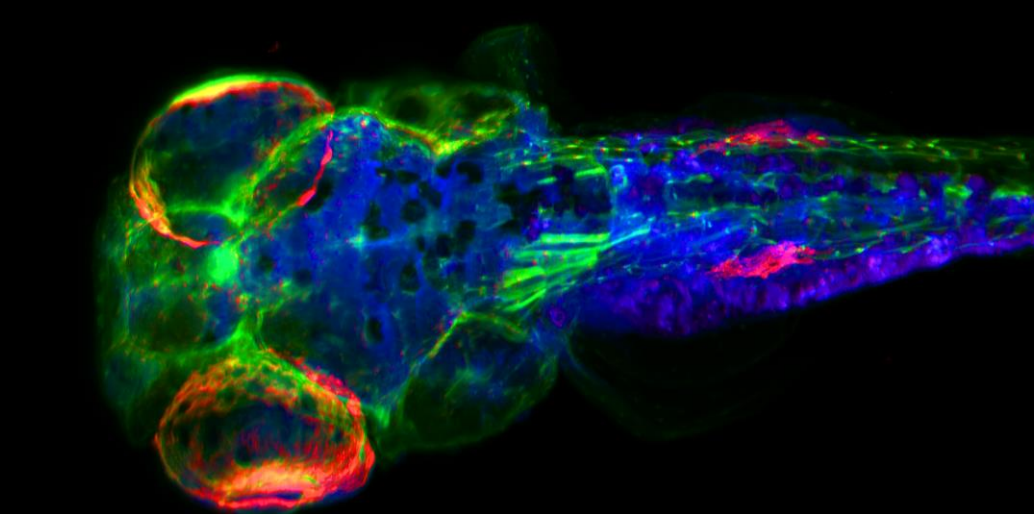
3D STED Super resolution



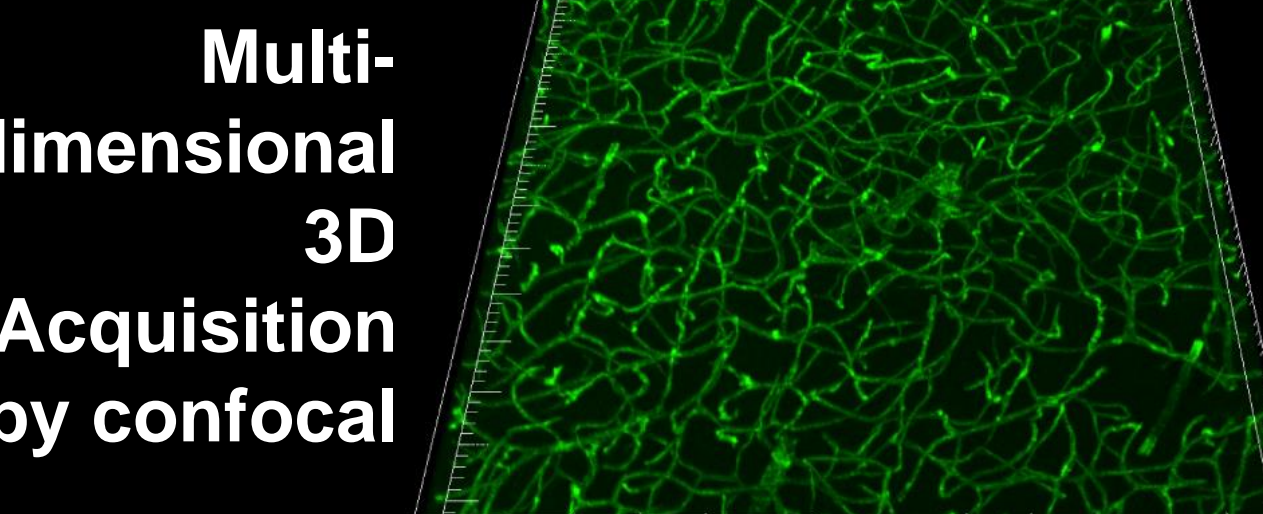
Laser Capture, Microdissection & Laser Tweezers



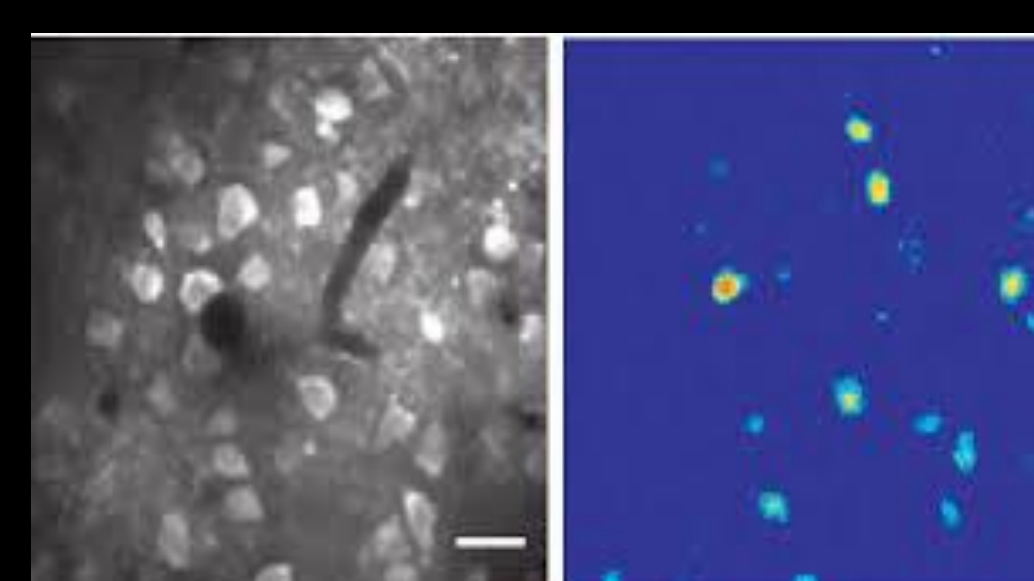
Fluorescent Recovery after Photobleach



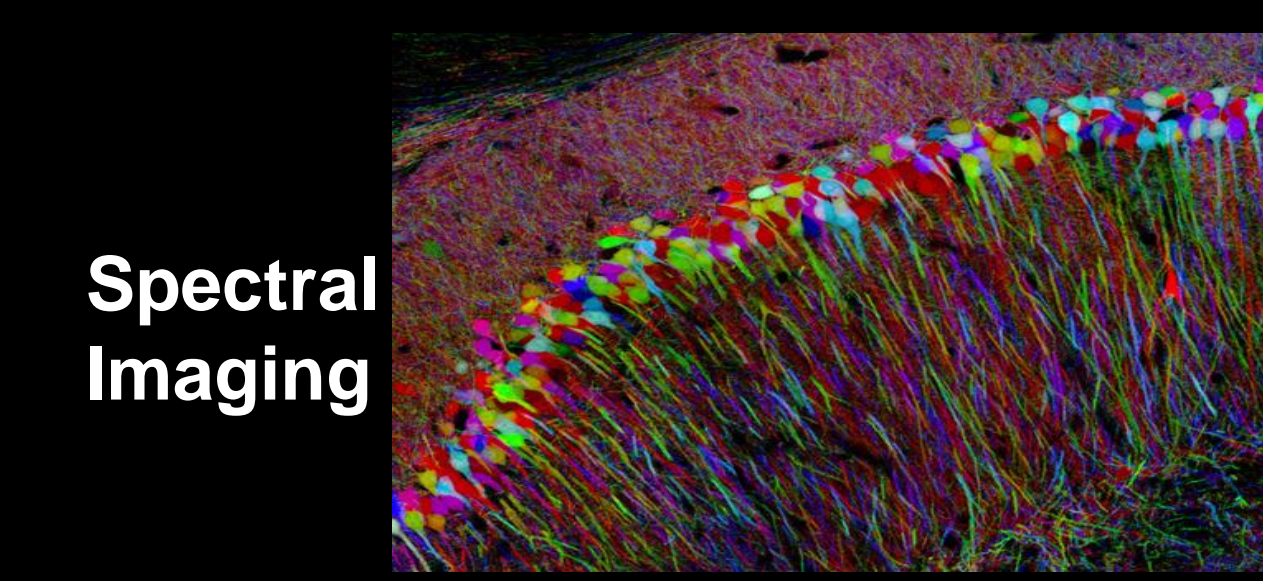
Lightsheet imaging on whole animal or intact organ



Multi-dimensional 3D Acquisition by confocal



Calcium Imaging

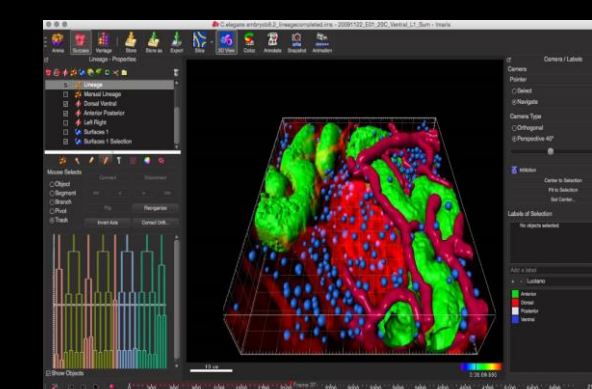


Spectral Imaging

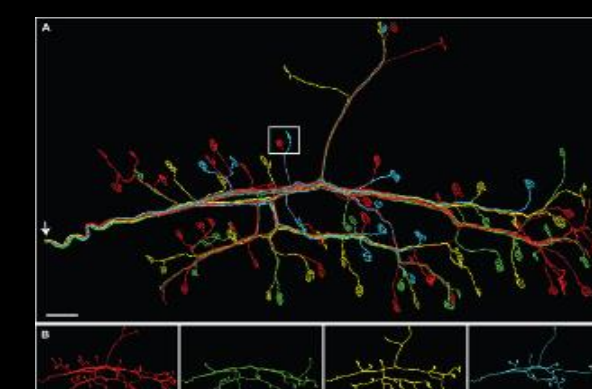
Visualize and Analyze

Visualize and analyze your samples with workstations you can VPN into from anywhere

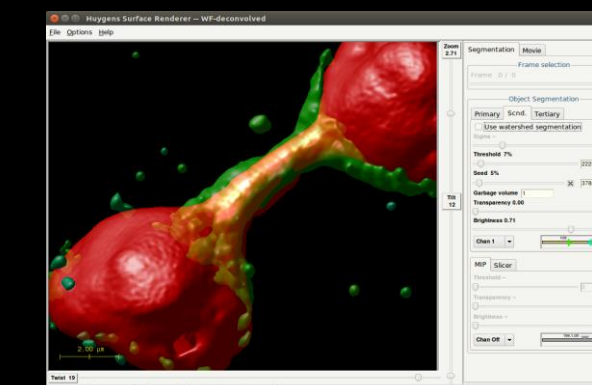
- Multi-channel cell scoring
- neuron tracing,
- particle measurements
- volume measurements
- tracking



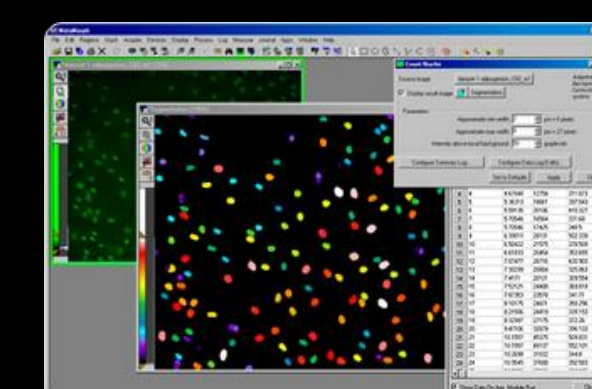
Bitplane Imaris



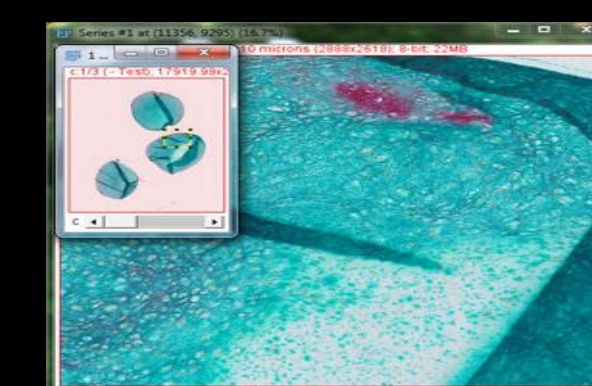
Amira Filament Tracing and Large Volume Module



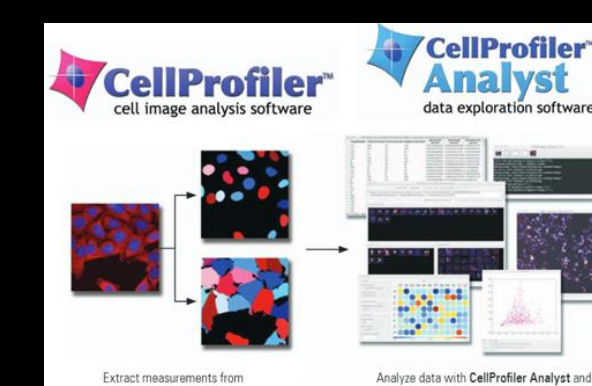
Huygens Scientific Volume Imaging



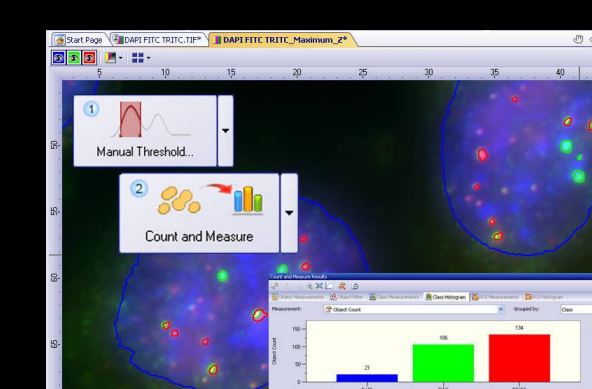
Metamorph with quick analysis modules



Fiji with .vsi reader



CellProfiler



Cellsens

Access

Everyone is welcome! No restrictions on core facility usage.

NINDS grant holders enjoy subsidized rates.

Dedicated staff to help you with your imaging needs whether you are an imaging expert or have never used a microscope before.

- Training and advice to fit your needs
- Online reservations for all systems
- Trained users can access the equipment 24hrs, 365 days
- Help with experiment approach and sample prep
- Support and advanced trainings when you need it
- Online reservation and signup
- Users can access equipment 24 hours a day 365 days/year
- Offer full service imaging to fit your busy schedule

Contact Info

Imaging Overlord: Michelle Ocana
michelle_ocana@hms.harvard.edu
617-432-1683

Science guy: Aurelien Begue
Aurelien_begu@hms.harvard.edu

Imaging Technicians: Mahmoud el-Rifai
mahmoud-_el-Rifai@hms.harvard.edu

Michael Blanchard
Michael_Blanchard@hms.harvard.edu

Admin Assistant: Celia Muto
Celia_muto@hms.harvard.edu

Find Out More



<https://nif.hms.harvard.edu/>

Corporate Affiliates



Andor Spinning disk Lavisision Lightsheet Macro Dissection Leica SPE confocal Zeiss PALM Zeiss LSM 510 Olympus FV1000 Whole Slide scanner Leica SP8X STED Widefield STORM