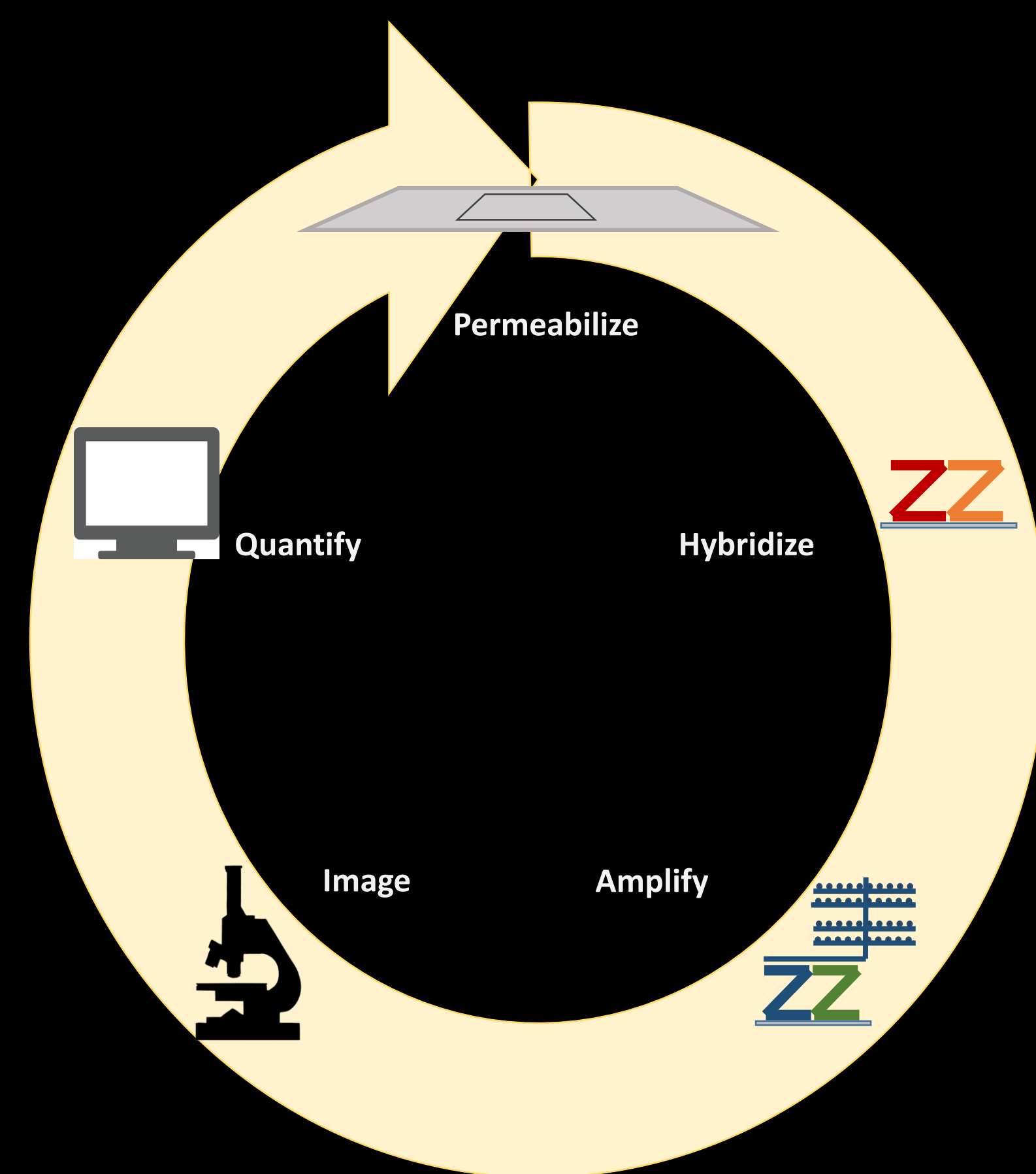


In Situ Hybridization

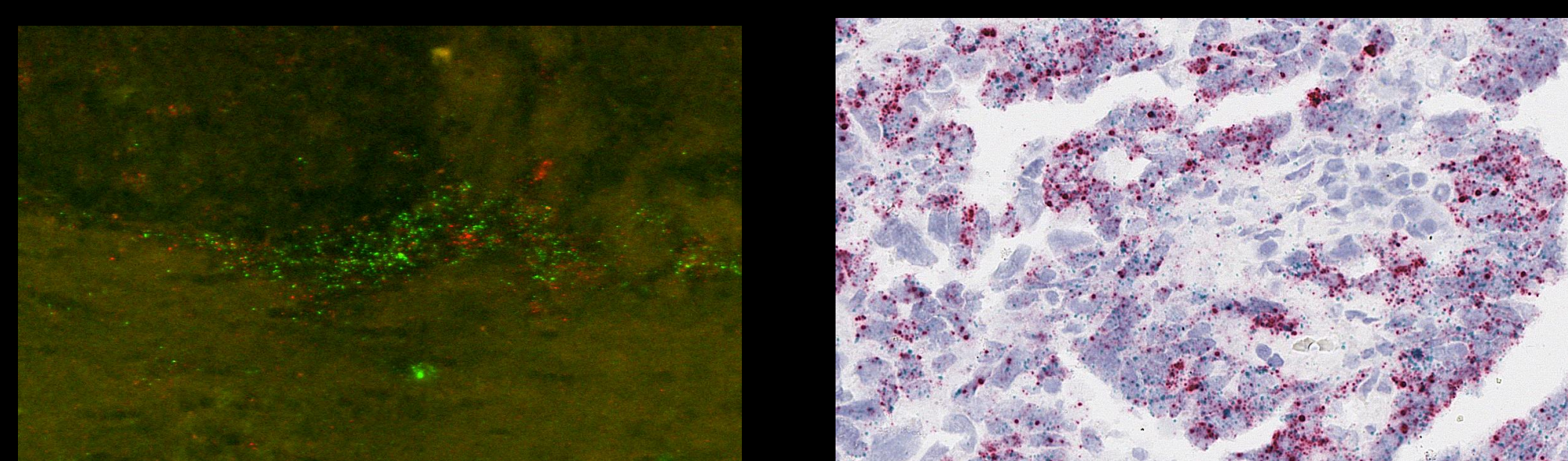
Standard, Multiplexing, IHC staining

In situ hybridization (ISH) is a powerful technique for localizing specific nucleic acid targets within fixed tissues and cells. This technique provides temporal and spatial information about gene expression and genetic loci. In situ hybridization is a powerful technique for identifying specific mRNA species within individual cells in tissue sections, providing insights into physiological processes and disease pathogenesis.

- Dual RNA ISH
- RNA IHC
- Multiplexing (dual ISH and IHC)



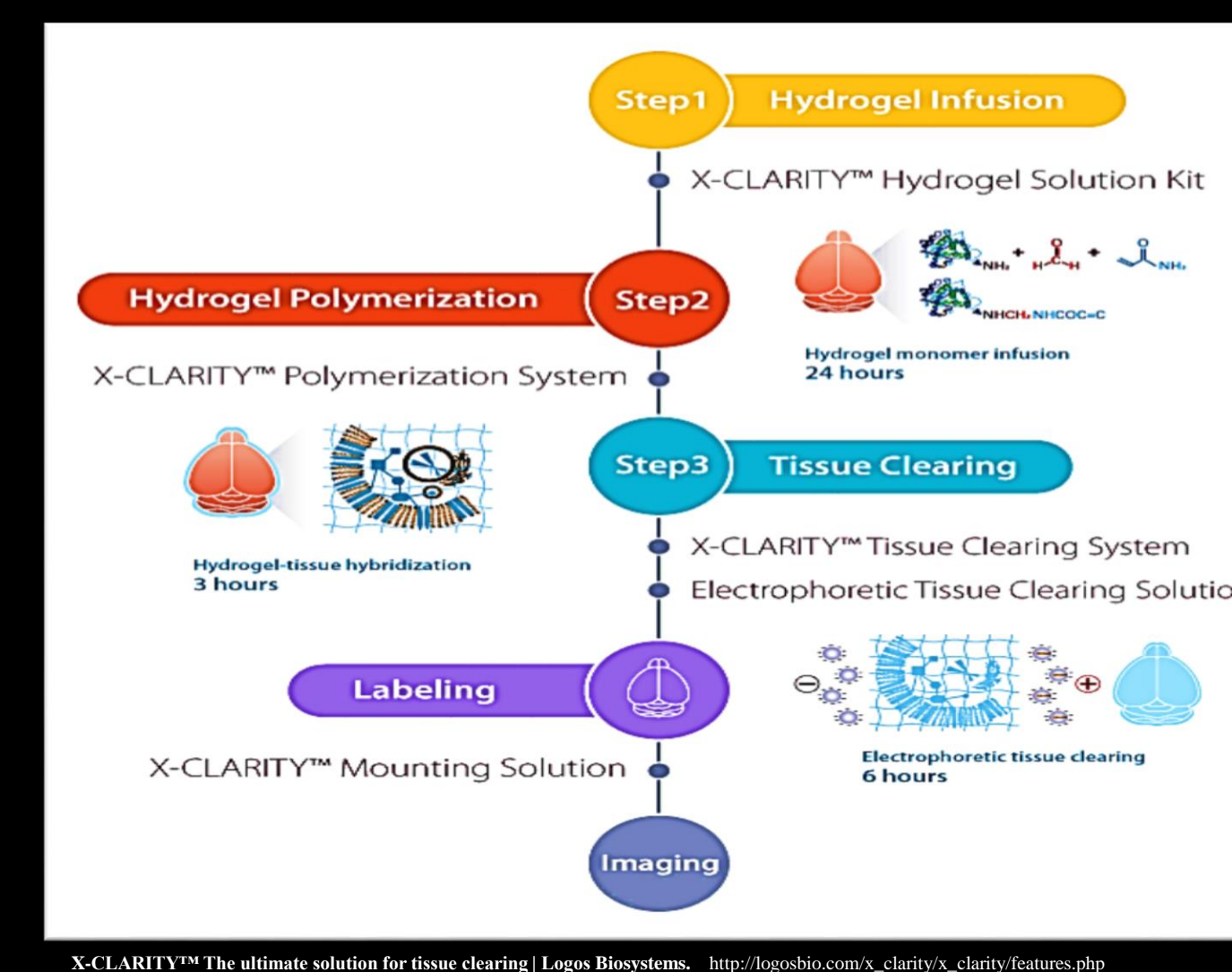
Complete the process by imaging with any of our imaging systems. Confocal, Widefield, Brightfield, Whole slidescanning.



Tissue Clearing

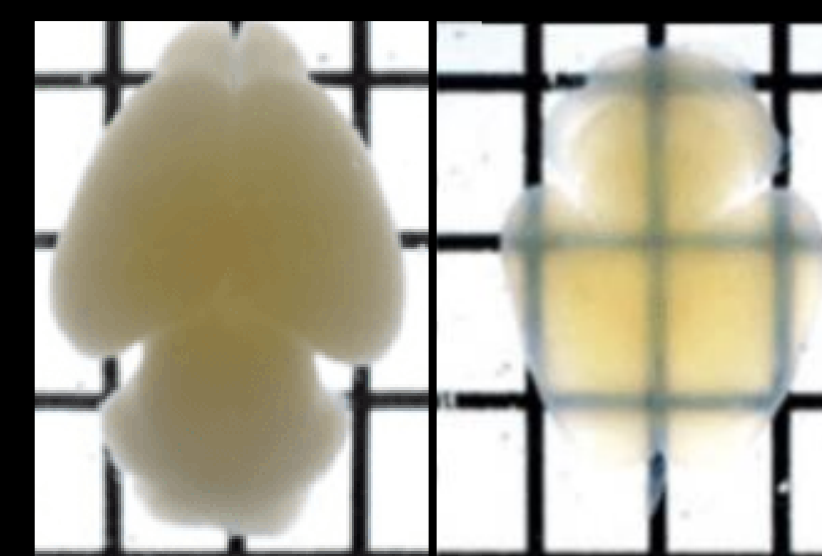
CLARITY is a tissue clearing method that produces structurally sound and transparent whole tissues ready for multiple rounds of antibody labeling and imaging.

How does it work?



The X-CLARITY™ Systems have been used to clear a variety of tissue:

- Brain
- Bone
- Ear
- Embryo
- Heart
- Kidney
- Liver
- Lungs
- Muscle
- Pancreas
- Spinal Cord
- Spleen
- Thymus
- Tumor



Mouse Brain before and after clearing



Embryo before and after clearing

Whole Tissue Staining

Our core performs active and passive tissue staining techniques on your cleared tissue. You pick the probes, we do the rest.

Lightsheet Imaging

The satisfaction of instantly seeing your results! Simply walk across the hall to the LaVision Ultramicroscope II lightsheet microscope to capture your images. IMARIS workstations are available to render your final results.

Access

Dedicated staff to help you with your project needs.

- Extraordinary staff
- Help with experiment approach and sample prep
- Support and advanced trainings when you need it
- Low fees

- The Core is supported by the Neural Imaging Center as part of an NINDS P30 Core Center grant #NS072030. Therefore, NINDS grant holders have the priority to use our services.
- NINDS grant holders enjoy discounted rates on services and equipment usage

Contact Info

Director: Michelle Ocana
michelle_ocana@hms.harvard.edu
617-432-1683

The Dude: Mahmoud El-Rifai
Mahmoud_el-rifai@hms.harvard.edu
617-432-1683

Imaging Specialist: Mike Blanchard
Michael_Blanchard@hms.harvard.edu
617-432-1683

Administrative Assistant: Celia Muto
celia_muto@hms.harvard.edu
617-432-1683

Find Out More

<https://nif.hms.harvard.edu>

Corporate Affiliates