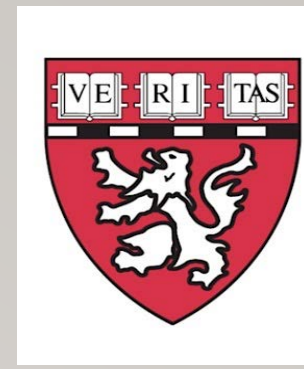




Cellular Imaging Core of IDDRC

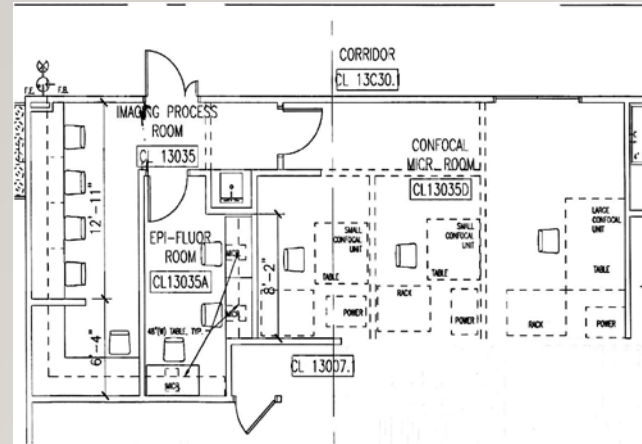


Boston Children's Hospital, Center for Life Sciences, 3 Blackfan Circle
 Director: Chinfei Chen, M.D., Ph.D. Assistant Director: Cvic Innocent, Ph.D.

SERVICES PROVIDED

CLS 13035 (& CLS 12145 // Enders SB-68)

- Confocal Microscopy
- Wide-field fluorescence Microscopy
- Bright field/Transmitted light Microscopy
- 2 photon *in vivo* imaging
- Image analysis & software (FIJI/ImageJ; Volocity, IMARIS, NeuroLucida & StereoInvestigator)



JOIN THE CIC COMMUNITY

In order to use our microscopes you must:

1. email "Vic", describing your samples & imaging needs or list the equipment your lab members use
2. set up an iLabs account
3. get trained on the instrument(s) of choice

cvic.innocent@childrens.harvard.edu

Nikon E800_{OIL} & 80i_{AIR}

Nikon E800 & 80i digital imaging WF & EPI microscopes with DAPI, GFP, RFP and Cy5 filters. Color Hamamatsu ORCA-R2 camera available.

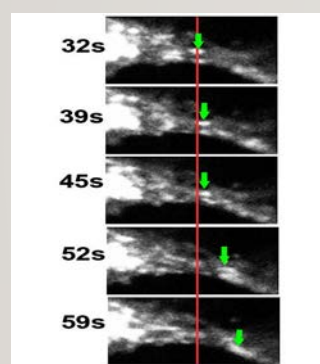


Zeiss StereoDiscovery.V20

Dissecting WF & EPI microscope with a 16bit camera, automatic zoom, adjustable lighting conditions, & standard filter sets (UV/DAPI, GFP, TexasRed).

Ultraview VOX (Spinning Disc)

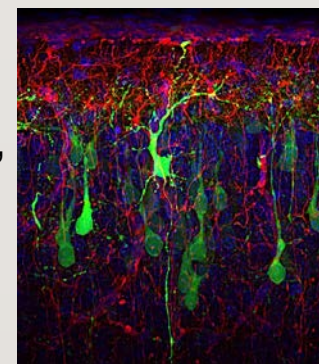
Rapid, live-cell imaging (hours to days) with high resolution and minimal phototoxicity via 6 lines (405nm, 440nm, 488nm, 514nm, 561nm, 640nm)



C.Schubert, Walsh Lab

Zeiss LSM 700

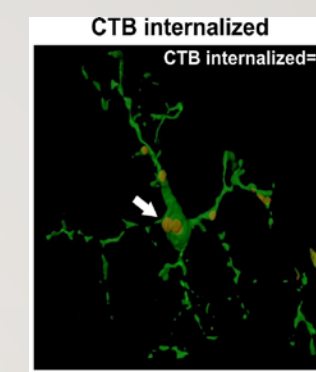
DAPI, GFP, RFP & Cy5 filters for EPI & laser lines inc. 405nm, 488nm, 555 nm, & 633nm for confocal mode (w/ high sensitivity & high S:N)



T.Hill, CIC

Zeiss Tomographer (AxioPhot)

WF & EPI system with standard filter sets (UV/DAPI, GFP, TexasRed), a motorized stage for large scanned tiles & Z-stacks.



D.Schaeffer, Stevens Lab

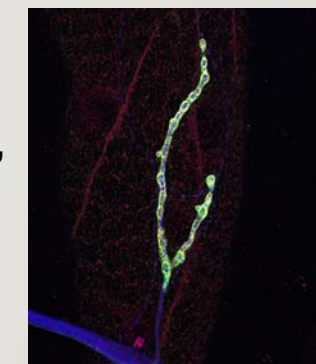
Nikon Ti-Eclipse

Live-cell WF & EPI system with heated chamber, O₂/CO₂/humidity & standard filter sets for time-lapse imaging & a motorized stage for tiled image acquisition.



Zeiss LSM 710 (with 2p via MaiTai)

Multiphoton/confocal imaging with 458nm, 488nm, 592 nm, 633nm, and 690-1020nm (via MaiTai)



T.Mosca, Schwarz Lab

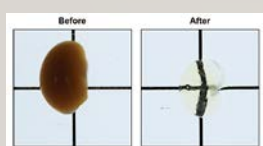
Olympus MPE-RS (Enders SB-0068)

Light path optimized for deep imaging in awake behaving imaging via 2P optogenetics. Stage is designed to handle rigs customized for individual research experiments.



CLARITY clearing (CLS 12145)

Can be used prior to imaging at various microscopes available in the facility



WORKSHOPS

- IMARIS Imaging Software
- Volocity Imaging Software
- CLARITY Clearing System
- NeuroLucida & Stereo Investigator Imaging Systems
- Transmitted light (TL) & Reflected light (RL) microscopy

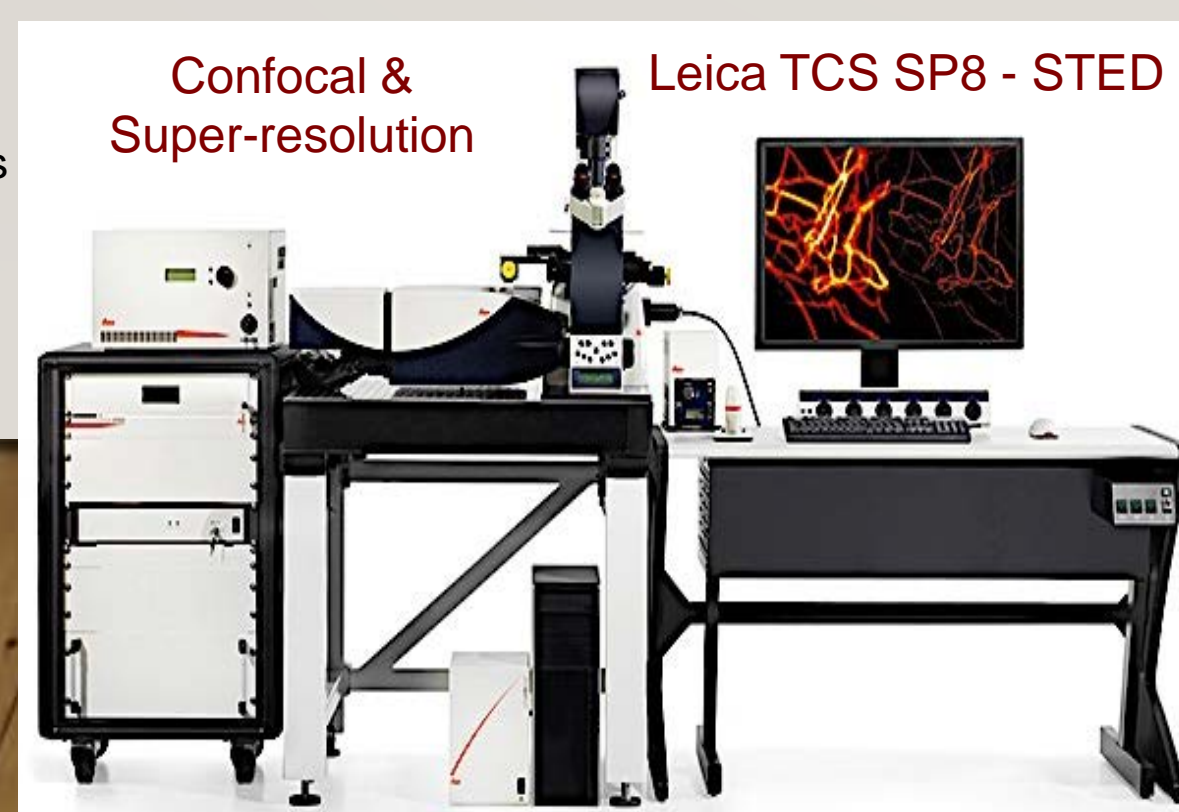
COST OF USE

Fees (rates for various services)

Instrument	IDDRC & BCH Member Cost	Non-member Cost
2-Photon, Resonant scanner	\$60.00/hour	N/A
LSM 710	\$26.00/hour	\$60.00/hour
LSM 700	\$26.00/hour	\$60.00/hour
Ultraview (SD) confocal	\$20.00/hour, if less than 10 hours long*	\$30.00/hour, if less than 10 hours long*
Array Tomographer	\$5.00/hour	\$9.00/hour
NeuroLucida/CLARITY	\$5.00/hour	\$8.00/hour
StereoDiscovery V.20	\$5.00/hour	\$8.00/hour
Volocity/IMARIS software	\$4.00/hour	\$8.00/hour
Nikon Microscopes	\$3.00/hour	\$5.00/hour
Training/Consultation	Free	Free

COMING SOON!

- White light, tunable laser
- 405/488/594/647 confocal lines
- 594 STED laser (for R/G)
- Stagetop incubator



* For live sample imaging sessions of 10-24hours, the cost is \$10/hour (internal) or \$15/hour (outside); for sessions longer than 24hours, the cost is \$5/hour (internal) or \$7.5/hour (outside).